

INSECTS RESEMBLING MOSQUITOES

AQUATIC INSECTS (Water Associated):

Non-biting insects that resemble mosquitoes are present in the County at various times and places throughout the entire year. They resemble mosquitoes so closely that frequently they are reported to the District as being mosquitoes, even though none of them has bitten or attempted to feed on a person. These insects belong to several groups and come from a variety of breeding sources. Mosquitoes DO NOT "swarm" as do many of the following gnat-like insects.

Midges (*Chironomidae*):

These are the most widespread and numerous insects resembling mosquitoes in this area. When present, they are seen swarming or "dancing" in the air, close to the ground, and at open porches. Periodically they will rest in large numbers on walls, screens, and buildings, particularly during the warmer part of the day. When present in large numbers, they can be annoying.

These gnats can be distinguished from mosquitoes by the absence of a biting "beak" or proboscis, and by the presence of two large feathery antennae on the head. The larvae develop in water, such as lakes, ponds, streams, and pools. They are often red and are frequently referred to as "blood worms." Mass hatching may occur and the spontaneous appearance of large numbers may cause concern.

Dixa Midges (*Dixidae*):

Their larvae also live in water and have a characteristic U-shape. Adults are slightly smaller than mosquitoes and are often found in swarms at dusk. Adults live less than one week.

Mayfly (*Ephemeroptera*):

Mayflies are not true flies but belong to the order Ephemeroptera, which means "short lived." Adult mayflies live one to two days and do not feed. The adults molt once, leaving their old cast skin on the wall surface where it was shed. They are easily recognized by a triangular wing and two or three thread-like tails. Larvae are an important food for many freshwater fish. Eggs are laid on rocks or other objects in the water.

TERRESTRIAL INSECTS (Those that develop in the ground):

Crane Flies (*Tipulidae*):

Adult crane flies are delicate insects and vary in size from 1/16 inch to as large as 1 1/2 inches. The largest crane flies are often referred to as "daddy long legs." Some of the group resemble mosquitoes very closely, but adult crane flies cannot bite and their larvae are actually beneficial as soil inhabitants.

Dance Flies (*Empididae*):

They are somewhat gnat-like and receive the name dance flies from their mating "dance" or reactions. Swarms are found typically in open sunny places, often near water, around houses, shrubs, and fences at dusk. Individuals within the swarm move rapidly up and down, thus, the name dance flies. Adults do not bite.

There are several other types of insects commonly found around the house that develop in damp soil with decaying vegetation high in organic content, such as lawns, stream margins, decaying wood, and compost piles.

Fungus Gnats (*Mycetophilidae*):

Adults are common in shaded and wooded areas. They resemble mosquitoes, but have hairy or "spiny" legs. These insects do not bite.

Moth Flies (*Psychodidae*):

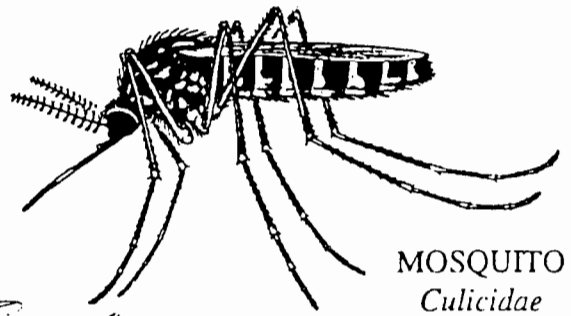
Adults are small to minute, hairy, with wings in a typical roof-like position when at rest. Adults are often found around drains and sewers. Moth flies do not bite.

Biting Midges, Punkies (*Ceratopogonidae*):

These very small insects (some are called "no-see-ums") are vicious daytime biters, breeding primarily in sandy clay, mud, and seashores. They are usually found close to their sources due to a limited flight capacity.

NOTE: Most, if not all of these insects, are attracted to lights at night and are frequently seen around porch/patio lamps. Although annoying, ALL but the last group (Punkies) ARE NON-BITING, and are not of medical importance.

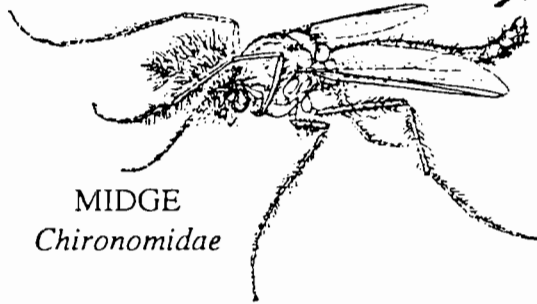
MOSQUITO-LIKE FLIES
AND RELATIVES



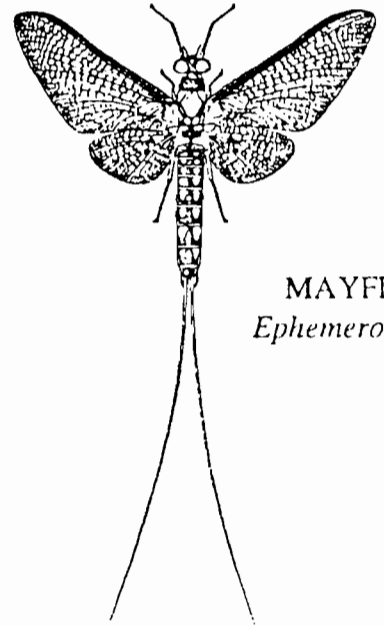
MOSQUITO
Culicidae



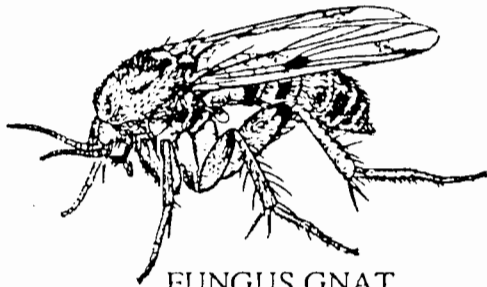
DIXIA MIDGE
Dixidae



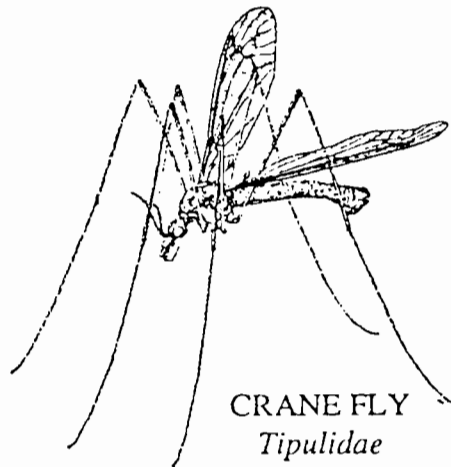
MIDGE
Chironomidae



MAYFLY
Ephemeroptera



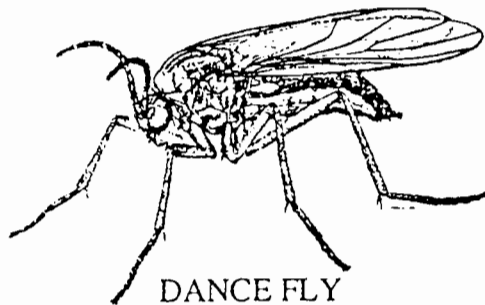
FUNGUS GNAT
Mycetophilidae



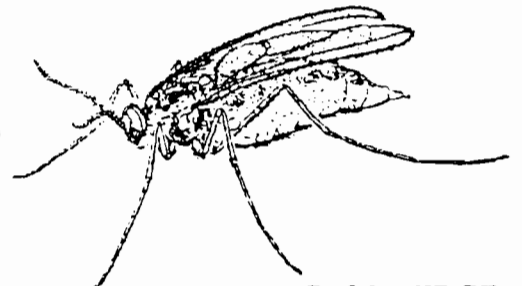
CRANE FLY
Tipulidae



OWL MIDGE-MOTH FLY
Psychodidae



DANCE FLY
Empididae



GALL MIDGE
Cecidomyiidae

WARREN COUNTY MOSQUITO
EXTERMINATION COMMISSION

P.O. BOX 388, 2 FURNACE ST.
OXFORD, NEW JERSEY 07863-0388
(908) 453-3585 • FAX (908) 453-2662



BLACK GNAT
Ceratopogonidae
("bites")