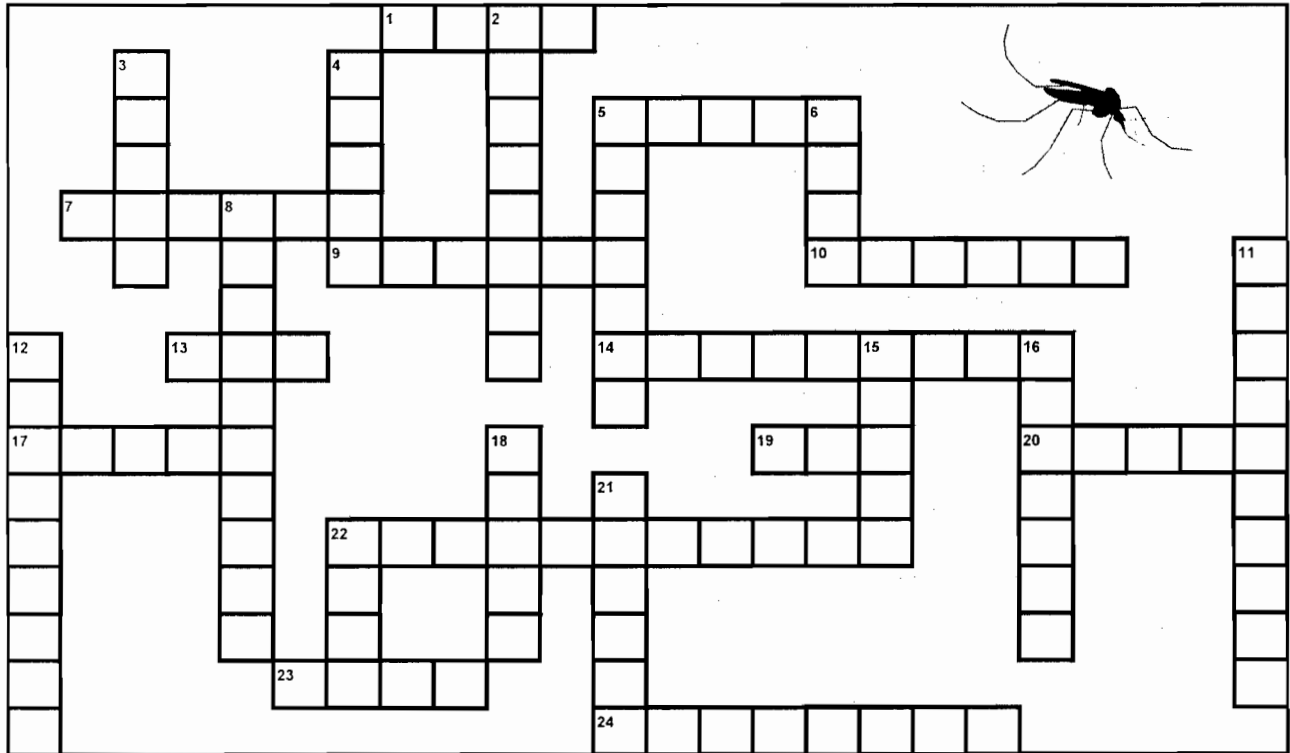


# MOSQUITO FACTS CROSSWORD PUZZLE



**ACROSS CLUES:**

1. Mosquitoes start their lives as \_\_\_\_.
5. Female mosquitoes need \_\_\_\_ to produce eggs.
7. Only the \_\_\_\_ mosquito bites.
9. When a mosquito bites, it injects \_\_\_\_ through its proboscis.
10. A \_\_\_\_ is an arachnid not an insect.
13. Asian Tiger mosquitoes bite during the \_\_\_\_.
14. Mosquitoes spread \_\_\_\_ disease to dogs.
17. The final stage of development for a mosquito is the \_\_\_\_.
19. A \_\_\_\_ is an animal that eats mosquitoes at night.
20. The second stage of development for the mosquito is the \_\_\_\_.
22. Male mosquitoes eat \_\_\_\_.
23. A dragonfly is also called a mosquito \_\_\_\_.
24. Mosquitoes can grow in a \_\_\_\_ of water.

**DOWN CLUES:**

2. A fish that eats mosquito larvae is the \_\_\_\_.
3. Asian Tiger mosquitoes came to the United States in \_\_\_\_.
4. The female mosquito \_\_\_\_ when she is ready to lay eggs.
5. Mosquitoes \_\_\_\_ air just like people.
6. \_\_\_\_ can get heartworm disease from mosquitoes.
8. The \_\_\_\_ mosquito grows and lives around houses and yards.
11. Around the house, mosquitoes grow in \_\_\_\_ that hold water.
12. A \_\_\_\_ is an insect that eats mosquitoes.
15. Mosquitoes grow in \_\_\_\_.
16. A disease mosquitoes can spread to people is \_\_\_\_.
18. Mosquitoes have one pair of \_\_\_\_.
21. A mosquito is an \_\_\_\_.
22. The third stage of development for a mosquito is the \_\_\_\_.

**WORD BANK**

- |         |              |
|---------|--------------|
| tires   | containers   |
| eggs    | adult        |
| bat     | saliva       |
| female  | spider       |
| hawk    | insect       |
| blood   | heartworm    |
| bites   | dragonfly    |
| dogs    | wings        |
| larva   | Asian Tiger  |
| pupa    | malaria      |
| water   | goldfish     |
| breathe | teaspoon     |
| day     | plant nectar |